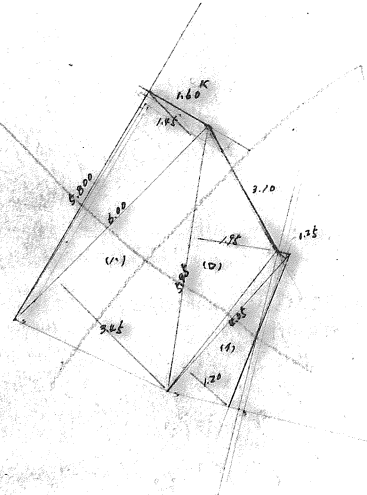
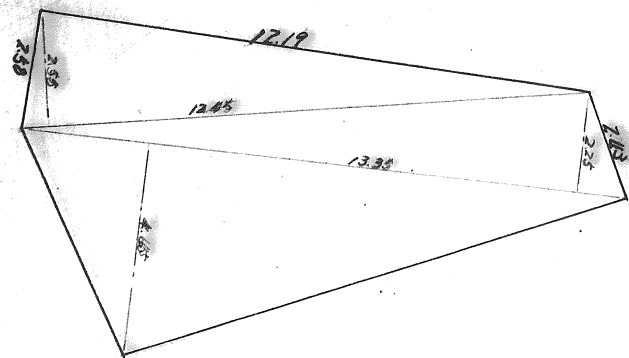


若松駅前土地区画整理事業 1/14
確定 図



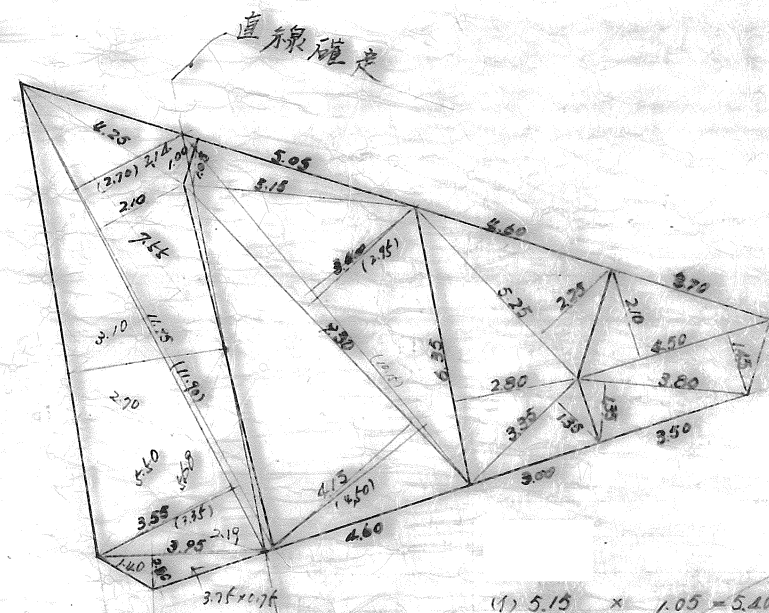
$$\begin{aligned} (1) & 4.05 (1.20 + 0.25) = 5.8725 \\ (2) & 5.95 \times 1.95 = 11.6025 \\ (3) & 6.00 (1.05 + 0.45) = 27.400 \\ \text{計} & 46.875 \\ \text{= 降} & 23.43 \end{aligned}$$



$$\begin{aligned} 12.45 \times 2.15 &= 26.7675 \\ 13.35 \times (2.25 + 0.65) &= 42.1150 \\ \text{計} & 68.8825 \\ \text{= 降} & 61.93 \end{aligned}$$

$$\begin{aligned} (1) & 7.55 \times 2.14 = 16.157 \\ (2) & 7.55 \times 0.10 = 0.755 \\ \text{計} & 16.912 \\ \text{= 降} & 19.70 \end{aligned}$$

$$\begin{aligned} (1) & 5.50 \times 2.70 = 14.850 \\ (2) & 5.68 \times 1.40 = 7.952 \\ (3) & 5.68 \times 2.19 = 12.4392 \\ \text{計} & 35.2412 \\ \text{= 降} & 17.62 \end{aligned}$$



$$\begin{aligned} (1) & 4.25 \times 1.00 = 4.25 \\ (2) & 11.95 (2.10 + 3.55) = 67.5175 \\ (3) & 3.95 \times 0.80 = 3.160 \\ \text{計} & 74.9275 \\ \text{= 降} & 37.40 \end{aligned}$$

$$\begin{aligned} (1) & 11.90 (2.70 + 3.35) = 71.995 \\ (2) & 3.75 \times 0.75 = 2.8125 \\ \text{計} & 74.8075 \\ \text{= 降} & 37.40 \end{aligned}$$

$$\begin{aligned} (1) & 5.15 \times 1.05 = 5.4075 \\ (2) & 9.30 (3.10 + 4.15) = 70.715 \\ \text{計} & 76.1225 \\ \text{= 降} & 37.81 \end{aligned}$$

$$\begin{aligned} (1) & 10.15 (2.95 + 4.5) = 75.6175 \\ \text{計} & 75.6175 \\ \text{= 降} & 37.80 \end{aligned}$$

$$\begin{aligned} (1) & 4.50 (2.10 + 1.45) = 15.975 \\ (2) & 3.80 \times 1.35 = 5.130 \\ \text{計} & 21.105 \\ \text{= 降} & 10.55 \end{aligned}$$

$$\begin{aligned} (1) & 5.25 \times 2.25 = 11.8125 \\ (2) & 6.55 \times 2.80 = 18.340 \\ (3) & 3.35 \times 1.35 = 4.5225 \\ \text{計} & 34.675 \\ \text{= 降} & 17.05 \end{aligned}$$